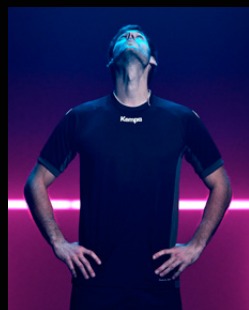
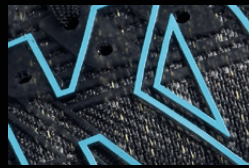




2021



Kempa



ATTACK

SHOES & HANDBALLS



Uwe Gensheimer



Jannik Kohlbacher



Martin Strobel



Daniel Rebmann



Stefan Salger



Marius Steinhauser



Hampus Wanne



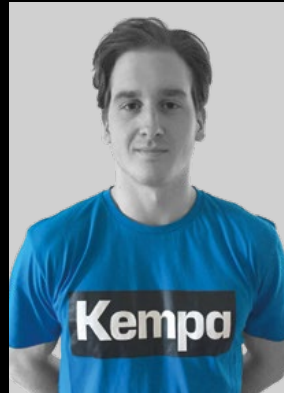
Dana Bleckmann



Andreas Wolff



Lukas Stutzke



Björgvin Gustavsson



Adrien Dipanda



Janus Daði Smárason



Alexander Reimann



Tomas Babak



Jonas Källmann



Tim Hornke



Joscha Ritterbach



Evgeni Pevnov



Luis Foegle



Renars Uscins



Jonathan Carlsbogård



Xenia Smits



Laetitia Quist



Fabian Gutbrød



Djibril M' Bengue



Marcel Niemeyer



Patrick Weber



Annika Ingenpass



Eloy Morante Maldonado



Maxi Mühlner



Lea Rühner



Björn Zintel



Hendrik Schreiber





06 ATTACK ONE 2.0



10 WING LITE 2.0



22 ATTACK ONE 2.0 **NEW**

AVAILABLE FROM JUNE 2021



26 ATTACK MID **NEW**

AVAILABLE FROM JUNE 2021



28 WING LITE 2.0 **NEW**

AVAILABLE FROM JUNE 2021



32 HANDBALLS





SOLES BY  MICHELIN



S

ATTACK

STABILITY

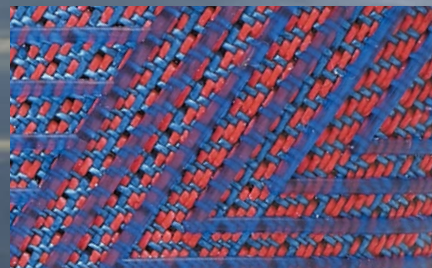
MATRYX[®] 2.0



SOLES BY  MICHELIN



JANNIK KOHLBACHER





Elastic insock construction for highest comfort.



Combined heel and midfoot fixation element for maximum stability.



Injected torsion element for excellent stability, ergonomically rolling motion and additional support of the arch.



Co-moulded ethylene vinyl acetate cushioning for improved absorption and rebound properties.

ATTACK

MATRYX^{2.0}

MATRYX 2.0[®] is an innovative woven fabric made of polyamide and kevlar-based fibres. This technology is patented by CHAMATEX[®], a company specialized on the production of high-performance technical fabrics.

The woven upper with kevlar zone support provides excellent stability without compromising about lightness and flexibility. Its outstanding breathability and superior comfort makes MATRYX 2.0[®] the perfect indoor shoe technology.




**CONTROL
THE GAME**

SOLES BY  **MICHELIN**

01



MATRYX^{exo}

SOLES BY  MICHELIN

ATTACK ONE 2.0

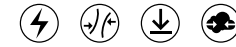
Art. 2008590

Size 6-12, 13, 14, 15

Weight 318g/Size UK 8

Material upper material: textile + thermoplastic polyurethane, lining: textile, sole: rubber

01 kempablue/fluor red



01



MATRYX^{exo}

SOLES BY  MICHELIN

ATTACK ONE 2.0 WOMEN

Art. 2008620

Size 3,5-10

Weight 298g/Size UK 6

Material upper material: textile + thermoplastic polyurethane, lining: textile, sole: rubber

01 diva blue/light grey



01



MATRYX[®] mesh

SOLES BY  MICHELIN

ATTACK TWO 2.0

Art. 2008630

Size 6-12, 13, 14, 15

Weight 315g/Size UK 8

Material upper material: textile + 3D print, lining: textile, sole: rubber

01 ice grey/fluo red



01



02



ATTACK THREE 2.0

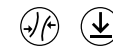
Art. 2008640

Size 3,5-12, 13

Weight 312g/Size UK 8

Material upper material: textile, lining: textile, sole: rubber

01 kempablue/fluo red, 02 white/navy



01



ATTACK 2.0 WOMEN

Art. 2008650

Size 3,5-10

Weight 272g/Size UK 6

Material upper material: textile, lining: textile, sole: rubber

01 white/kempablue



01



ATTACK MIDCUT

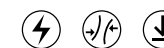
Art. 2008499

Size 6-12, 13, 14, 15

Weight 331g/Size UK 8

Material upper material: textile + thermoplastic polyurethane, lining: textile, sole: rubber

01 black/white



SOLES BY  MICHELIN



Elastic insock construction for highest comfort.

SOFT FIT



**ONE OF THE
LIGHTEST
SHOES ON THE
MARKET**

POWER CORE



Light ethylene vinyl acetate-cushioning with integrated softpad for the best comfort and excellent shock absorption.

TORSION PLATE



For more control and improved power transmission.

SOLES BY  **MICHELIN**

03



SOLES BY  MICHELIN

WING LITE 2.0

Art. 2008520

Size 6-12, 13, 14, 15

Weight 268g/Size UK 8

Material upper material: textile + 3D print, lining: textile, sole: rubber

03 white/steel blue



03



SOLES BY  MICHELIN

WING LITE 2.0 WOMEN

Art. 2008530

Size 3,5-10

Weight 234g/Size UK 6

Material upper material: textile + 3D print, lining: textile, sole: rubber

03 white/turquoise



03



SOLES BY /  MICHELIN

WING 2.0

Art. 2008540

Size 6-12, 13, 14, 15

Weight 280g/Size UK 8

Material upper material: textile + 3D print, lining: textile, sole: rubber

03 white/black



02



SOLES BY /  MICHELIN

WING 2.0 WOMEN

Art. 2008550

Size 3,5-10

Weight 248g/Size UK 6

Material upper material: textile + 3D print, lining: textile, sole: rubber

02 white/fluo yellow



06



Sneakers with knitted upper



02



03



★ LIMITED EDITION ★

04



★ LIMITED EDITION ★

K-FLOAT

Art. 2008570

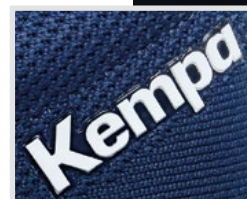
Size 3,5–12, 13, 14, 15

Weight 193g/Size UK 8

Material upper material: textile, lining: textile, sole: ethylene vinyl acetate + rubber

02 black, **03** deep green, **04** deep red, **06** navy

CUSTOMIZABLE



01



Size 28-33 (velcro closure)

SOLES BY  MICHELIN

02



Size 28-33 (velcro closure)

SOLES BY  MICHELIN



Size 34-39 (complete laces)



Size 34-39 (complete laces)

ATTACK 2.0 JUNIOR

Art. 2008660

Size 28-33 (velcro closure)
34-39 (complete laces)

Weight 246g/Size 35

Material upper material: textile + polyurethane, lining: textile,
sole: rubber

01 kempablue/fluo red, **02** fluo orange/fluo yellow



04



Size 28–33 (velcro closure)

SOLES BY /  MICHELIN

05



Size 28–33 (velcro closure)

SOLES BY /  MICHELIN



Size 34–39 (complete laces)



Size 34–39 (complete laces)

WING 2.0 JUNIOR

Art. 2008560

Size 28–33 (velcro closure)
34–39 (complete laces)

Weight 205g/Size 35


Material upper material: textile, lining: textile, sole: rubber

04 white/steel blue, **05** white/turquoise





GIRLS

01
WING 2.0 JUNIOR
Art. 200856005 | Page 15

02
LEO
Art. 200189203 | Page 35

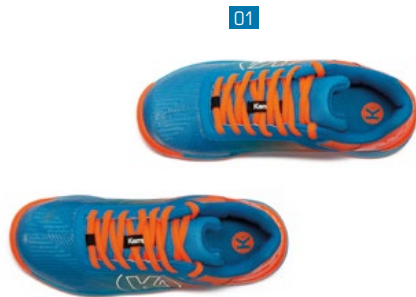
03
LOGO CLASSIC SOCKS
Art. 200354125 | Page 134

04
GRAPHIC SHIRT
Art. 200228402 | Page 117





BOYS



01
ATTACK 2.0 JUNIOR
Art. 200866001 | Page 14

02
LEO
Art. 200189202 | Page 35

03
LOGO CLASSIC SOCKS
Art. 200354124 | Page 134

04
GRAPHIC SHIRT
Art. 200228303 | Page 116



Kempa

W I N G
L I G H T N E S S

AVAILABLE FROM JUNE 2021



UWE GENSHEIMER



SOLES
BY



S

MATRYX[®] 2.0



ATTACK
STABILITY

AVAILABLE FROM JUNE 2021

Jannik Kohlbacher

JANNIK KOHLBACHER

SOLES BY  MICHELIN

W I N G

L I G H T N E S S

Dynamic honeycomb sculpture providing best multidirectional grip and explosive direction changes.

HONEYCOMB PROFILE



HYPER GRIP



Excellent grip for takeoff and landing.



Middle foot support for excellent stability and ergonomical rolling motion.

TORSION GUIDE



PIVOT



Area with smooth surface and circular shape for best turning movements.

SOLES BY  MICHELIN

Working together with MICHELIN we developed a new running sole, guaranteeing excellent and durable performance in terms of grip and durability.

More about our cooperation at:
www.kempa-sports.com/en/michelin/

ATTACK

STABILITY

Flex zones for excellent roll moves.

FLEX SECTOR



Abrasion resistant thanks to the bigger surface and providing outstanding grip at the same time.

HOLE PROFILE



Honeycomb sculpture with additional bowl shape and bigger profile lines providing best multidirectional grip.

HONEYCOMB PROFILE



PIVOT



Special area with smooth surface & circular shape for best turning movements.

PU injected torsion element for:
- excellent stability
- ergonomical rolling motion
- additional support of the arch

TORSION SUPPORT



SOLES BY  **MICHELIN**

Working together with MICHELIN we developed a new running sole, guaranteeing excellent and durable performance in terms of grip and durability.

More about our cooperation at:
www.kempa-sports.com/en/michelin/

ATTACK

MATRYX[®] 2.0

MATRYX 2.0[®] is an innovative woven fabric made of polyamide and kevlar-based fibres. This technology is patented by CHAMATEX[®], a company specialized on the production of high-performance technical fabrics.

The woven upper with kevlar zone support provides excellent stability without compromising about lightness and flexibility. Its outstanding breathability and superior comfort makes MATRYX 2.0[®] the perfect indoor shoe technology.



Elastic insock construction for highest comfort.

SOFT FIT



Combined heel and midfoot fixation element for maximum stability.

CONTROL CLIP



**CONTROL
THE GAME**

AVAILABLE FROM JUNE 2021

TORSION SUPPORT



Injected torsion element for excellent stability, ergonomically rolling motion and additional support of the arch.

SOLES
BY



KINETIC

POWER

Co-moulded ethylene vinyl acetate cushioning for improved absorption and rebound properties.

03



MATRYX^{2.0}

SOLES BY /  MICHELIN

NEW

AVAILABLE FROM JUNE 2021

ATTACK ONE 2.0

Art. 2008590

Size 6-12, 13, 14, 15

Weight 310g/Size UK 8

Material upper material: textile + thermoplastic polyurethane, lining: textile, sole: rubber

03 black/aqua



01



MATRYX^{mesh}

SOLES BY /  MICHELIN

NEW

AVAILABLE FROM JUNE 2021

ATTACK PRO 2.0 WOMEN

Art. 2008671

Size 3,5-10

Weight 265g/Size UK 6

Material upper material: textile + 3D print, lining: textile, sole: rubber

01 white/aqua



02



MTRIX[®] mesh

SOLES BY /  MICHELIN

NEW

AVAILABLE FROM JUNE 2021

ATTACK TWO 2.0

Art. 2008630

Size 6-12, 13, 14, 15

Weight 315g/Size UK 8

Material upper material: textile + 3D print,
lining: textile, sole: rubber

02 black/aqua



03



NEW

AVAILABLE FROM JUNE 2021

ATTACK 2.0 WOMEN

Art. 2008650

Size 3,5-10

Weight 272g/Size UK 6

Material upper material: textile,
lining: textile, sole: rubber

03 white/aqua



04



NEW **AVAILABLE FROM JUNE 2021**

ATTACK THREE 2.0

Art. 2008640

Size 3,5-12, 13

Weight 312g/Size UK 8

Material upper material: textile,
lining: textile, sole: rubber

04 black/aqua



05



NEW **AVAILABLE FROM JUNE 2021**

ATTACK THREE 2.0

Art. 2008640

Size 3,5-12, 13

Weight 312g/Size UK 8

Material upper material: textile,
lining: textile, sole: rubber

05 kempblue/fluo yellow



01



MTRX

SOLES BY /  MICHELIN



NEW

AVAILABLE FROM JUNE 2021

ATTACK MID

Art. 2008670

Size 6-12,13,14,15

Weight 380g/Size UK 8

Material upper material: textile + thermoplastic polyurethane, lining: textile, sole: rubber

01 black



ATTACK MID



SOFT FIT

HEEL KAGE

MATRYX^{2.0}

KINETIC POWER

AVAILABLE FROM JUNE 2021

CONTROL THE GAME

SOLES BY  MICHELIN

Working together with MICHELIN we developed a new running sole, guaranteeing excellent and durable performance in terms of grip and durability.

More about our cooperation at:
www.kempa-sports.com/en/michelin/

TORSION SUPPORT

W I N G

Elastic insock construction for highest comfort.

SOFT FIT



**ONE OF THE
LIGHTEST
SHOES ON THE
MARKET**

AVAILABLE FROM JUNE 2021



POWER CORE



Light ethylene vinyl acetate-cushioning with integrated softpad for the best comfort and excellent shock absorption.



TORSION PLATE

For more control and improved power transmission.

SOLES BY  **MICHELIN**

05



SOLES BY  MICHELIN

NEW

AVAILABLE FROM JUNE 2021

WING LITE 2.0

Art. 2008520

Size 6-12, 13, 14, 15

Weight 268g/Size UK 8

Material upper material: textile + 3D print,
lining: textile, sole: rubber

05 black/aqua



05



SOLES BY  MICHELIN

NEW

AVAILABLE FROM JUNE 2021

WING LITE 2.0 WOMEN

Art. 2008530

Size 3,5-10

Weight 234g/Size UK 6

Material upper material: textile + 3D print,
lining: textile, sole: rubber

05 white/aqua



05



SOLES BY MICHELIN

03



NEW

AVAILABLE FROM JUNE 2021

WING 2.0

Art. 2008540

Size 6-12, 13, 14, 15

Weight 280g/Size UK 8

Material upper material: textile + 3D print, lining: textile, sole: rubber

03 white/black, 05 navy/fluo orange



03



SOLES BY MICHELIN

NEW

AVAILABLE FROM JUNE 2021

WING 2.0 WOMEN

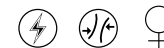
Art. 2008550

Size 3,5-10

Weight 248g/Size UK 6

Material upper material: textile + 3D print, lining: textile, sole: rubber

03 white/cool grey



04



ATTACK

SOLES BY MICHELIN



Size 28-33 (velcro closure)

Size 34-39 (complete laces)

05



ATTACK

SOLES BY MICHELIN



Size 34-39 (complete laces)

Size 28-33 (velcro closure)

NEW

AVAILABLE FROM JUNE 2021

ATTACK 2.0 JUNIOR

Art. 2008660

Size 28-33 (velcro closure)
34-39 (complete laces)

Weight 246g/Size 35

Material upper material: textile,
lining: textile, sole: rubber

04 black/aqua, **05** kempablue/fluo yellow



07



SOLES BY MICHELIN



Size 28-33 (velcro closure)

Size 34-39 (complete laces)

08



SOLES BY MICHELIN



Size 34-39 (complete laces)

Size 28-33 (velcro closure)

NEW

AVAILABLE FROM JUNE 2021

WING 2.0 JUNIOR

Art. 2008560

Size 28-33 (velcro closure)
34-39 (complete laces)

Weight 205g/Size 35

Material upper material: textile,
lining: textile, sole: rubber

07 navy/fluo orange, **08** white/aqua



SPECTRUM

SYNERGY PRO



SYNERGY, the unique handball technology from Kempa.

The innovative production procedure and revolutionary non-slip material improves the roundness and guarantees high form stability.

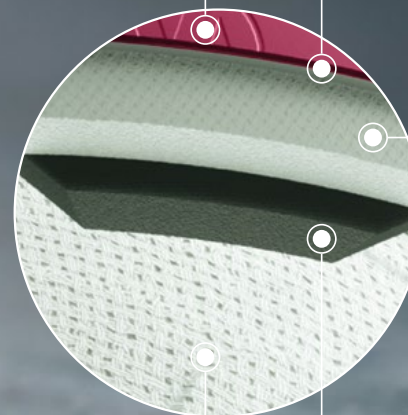
The result: more **GRIP**, better **FEEL FOR THE BALL**, better **CONTROL**.



Surface material with microfiber structure provides optimum grip and excellent ball control.



Multi-layered X2 lamination increases the rebound and softness of the ball.



Textile lamination provides excellent roundness and supports the stability and robustness.



Multi-layered X2 lamination increases the rebound and softness of the ball.



The latex bladder with textile lamination prevents over pumping while minimising air loss.

01



top matchball with an unique 30-panel-construction

very soft and grippy upper material with Kempa embossing for best grip and outstanding ball control

excellent rebound combined with a soft feel for the ball thanks to the multilayer foam lamination

latex bladder with textile lamination prevents from pumping over and provides air retention at the same time

suitable for the use of resin

SPECTRUM SYNERGY PRO

Art. 2001887

Size 2, 3

01 deep red/fluo orange



PVC
FREE

01



excellent match and training ball with a unique 30-panel-construction

soft and grippy upper material with Kempa embossing for best grip and an outstanding ball control

very good rebound combined with a comfortable feel for the ball thanks to the additional foam layer

latex bladder with textile lamination prevents from pumping over and provides air retention at the same time

suitable for the use of resin

SPECTRUM SYNERGY PLUS

Art. 2001889

Size 0, 1, 2, 3

01 black/anthra



PVC
FREE

02



high quality match and training ball with a unique 30-panel-construction

soft and grippy upper material with Kempa embossing for more grip and outstanding ball control

very good rebound with a comfortable feel for the ball thanks to the additional foam layer

latex bladder with textile lamination prevents from pumping over and provides air retention at the same time

suitable for the use of resin

SPECTRUM SYNERGY PRIMO

Art. 2001890

Size 0, 1, 2, 3

02 deep blue/light blue



PVC FREE

01



top matchball

very soft and grippy upper material with Kempa embossing for best grip and an outstanding ball control

excellent rebound combined with a soft feel for the ball thanks to the concentrated multilayer foam lamination

the latex bladder provides outstanding rebound and air retention at the same time

suitable for the use of resin

BUTEO

Art. 2001888

Size 2, 3

01 red/black

PVC FREE

01



excellent training ball

soft and grippy upper material with Kempa embossing for better grip and very good ball control

very good rebound with a comfortable feel for the ball thanks to the additional foam layer

the latex bladder retains its shape and provides outstanding rebound and air retention at the same time

suitable for the use of resin

GECKO

Art. 2001891

Size 0, 1, 2, 3

01 fluo green/anthra



01



durable training ball

grippy upper material with Kempa embossing for better grip and ball control

comfortable feel for the ball thanks to the soft foam lamination

the latex bladder retains its shape and provides outstanding rebound and air retention at the same time

suitable for the use of resin

02



03



LEO

Art. 2001892

Size **01** 0, 1, 2, 3
02 0, 1, 2, 3
03 0, 1, 2

01 fluo orange/black, **02** fluo red/kempablue, **03** turquoise/flu yellow



01



lightweight training and match ball for children

grippy PU upper material with Kempa embossing for more grip and ball control

comfortable feel for the ball thanks to the soft foam lamination

the latex bladder retains its shape and provides outstanding rebound and air retention at the same time

02



03



TIRO

Art. 2001893

Size Color **01** 00
Color **02** 0
Color **03** 1

01 red/shock red, **02** iceblue/royal, **03** fluo green/green



PVC FREE LITE

08



moulded handball made of soft and grippy cellular rubber in the classic Kempa design

09



10



DUNE (BEACHHANDBALL)

Art. 2001838

Size Color **08** 1
Color **09** 2
Color **10** 3

08 fluo green/kempablue, **09** fluo yellow/shock red, **10** shock red/red



PVC FREE

02



durable foam ball

low risk of injury

suitable for children

suitable for school sports and recreation

SOFT

Art. 2001894

Size one size

02 fluo red/kempablue, **04** fluo orange/black



PVC FREE

01



Plush ball in handball design

very light and soft

NEW

SOFT KIDS

Art. 2001896

Size one size

Material 100% polyester

01 kempablue/fluoyellow



PVC
FREE

02



weighted ball (600gr)

good grip, durable

TRAINING 600

Art. 2001823

Size 2

02 fluoyellow

PVC
FREE

02



weighted ball (800gr)

good grip, durable

TRAINING 800

Art. 2001824

Size 3

02 fluoyellow

PVC
FREE

Dealer

Germany, Austria, Switzerland

Germany

uhlsport GmbH
Klingenbachstrasse 3
72336 Balingen
Phone +497433 2680
Fax +497433 268194
Web www.kempa-sports.de
Mail germany@kempa-handball.com

Austria

uhlsport GmbH
Thomas Steingreß
Forchtenau 37
AUT 4971 Aurozlmünster
Phone +436645324656
Web www.kempa-handball.de
Mail tsteingress@uhlsport.de

Switzerland

uhlsport Schweiz
Dorfstraße 19
CH 3465 Dürrenroth
Phone +41796455502
Fax +41629641029
Mail switzerland@kempa-handball.com

France

uhlsport France

Zone Athélia 2, 170 Impasse du Serpolet
FR 13704 La Ciotat Cédex
Phone +33442088030
Fax +33442830873
Web www.uhlsportcompany.com
Mail france@kempa-handball.com

Spain

uhlsport Ibérica 2006 S.A.

C/ Berroa nº 19, Oficina 501 - 5ª planta
ES 31192 Tajonar/Navarra
Phone +34948206535
Fax +34948226376
Web www.uhlsportcompany.com
Mail spain@kempa-handball.com

UK

uhlsport UK

Klingenbachstraße 3
72336 Balingen
Phone +441993228708
Web www.uhlsport-uk.co.uk
Mail julie@uhlsportuk.com

Sweden

uhlsport Scandinavia AB

Ståhlbergsvägen 13
SE 63221 Eskilstuna
Phone +4616128860
Web www.uhlsportcompany.com
Mail sweden@kempa-handball.com

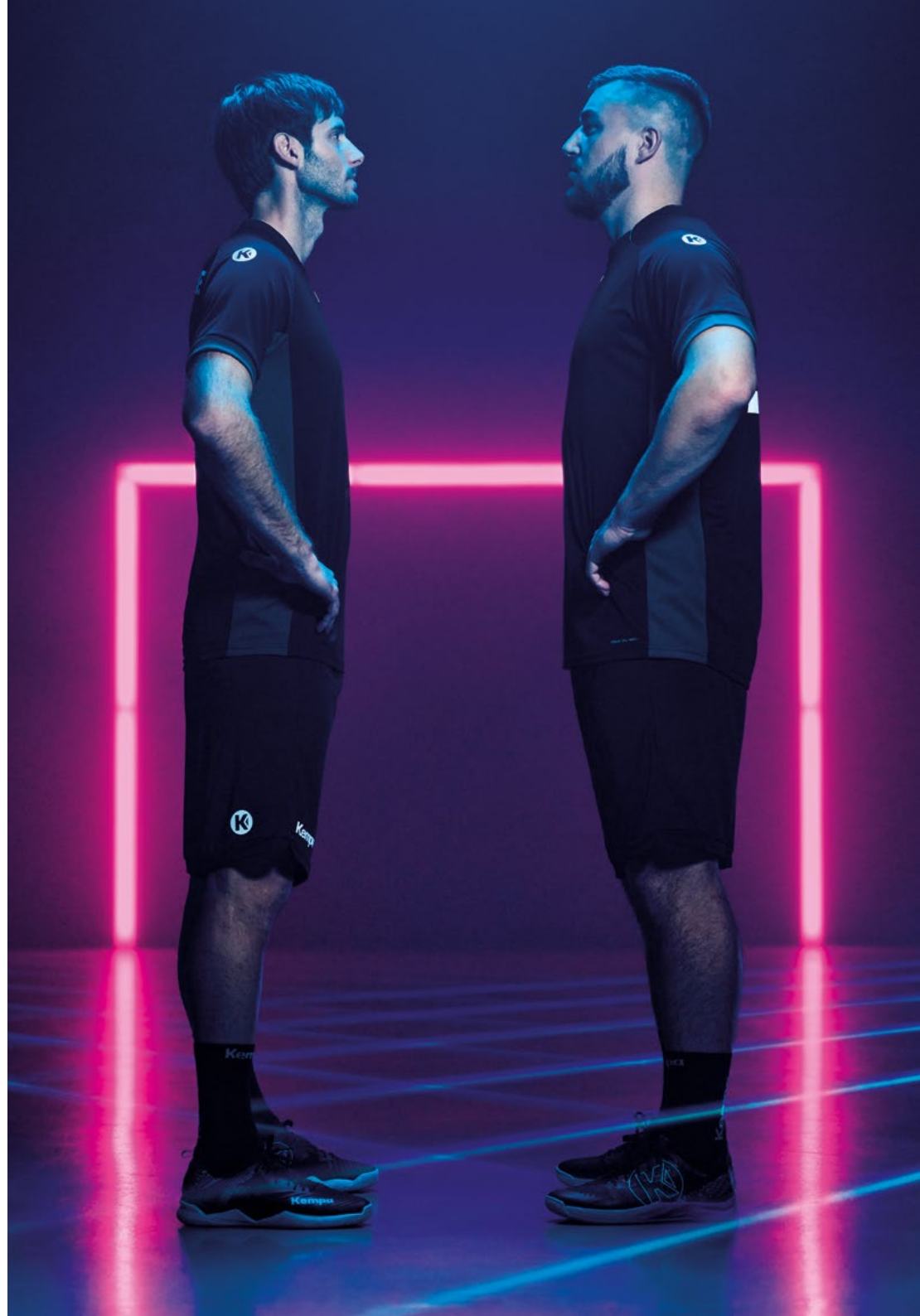
Benelux

uhlsport Benelux

Engelse Wandeling 2, K1G
BE 8500 KORTRIJK
Phone 0032 56224046
Mail alain@uhlsport.be

International Sales

If you have questions/inquiries for international markets,
please contact internationalsales@uhlsport.de



Shoesize

EUROPE	28	29	30	31	32	33	34	35	36	37	37½	38	38½	39	39½	40½	41	42	42½	43	44	44½	45	45½	46	47	48	49	50
USA	10	11	12	13	1	1½	2½	3	4	4½	5	5½	6	6½	7	7½	8	8½	9	9½	10	10½	11	11½	12	12½	13½	14½	15½
UK	10	10½	11½	12½	13½	1	2	2½	3½	4	4½	5	5½	6	6½	7	7½	8	8½	9	9½	10	10½	11	11½	12	13	14	15
JAPAN	16½	17½	18	18½	19	20	21	21½	22½	23	23½	23,7	24	24,5	25	25½	26	26½	27	27½	28	28½	29	29½	30	30½	31	32	33



Handballs IHF Standard

Age group	Age	Handball Size
Bambinis	under 6 years	00 (unofficial size)
Minis	ca. 6 – 8 years	0 (unofficial size)
Female youth: C, D, E	8 – 14 years	1
Male youth: D, E	8 – 12 years	1
Female youth: A, B	14 years and older	2
Male youth: C, B	12 – 16 years	2
Male youth: A	16 years and older	3
Men	18 years and older	3

Index Shoes & Handballs

Art.	Name	Page	Art.	Name	Page
2001823	TRAINING 600	37	2008520	WING LITE 2.0	11, 29
2001824	TRAINING 800	37	2008530	WING LITE 2.0 WOMEN	11, 29
2001838	DUNE	36	2008540	WING 2.0	12, 30
2001887	SPECTRUM SYNERGY PRO	33	2008550	WING 2.0 WOMEN	12, 30
2001888	BUTEO	34	2008560	WING 2.0 JUNIOR	15, 31
2001889	SPECTRUM SYNERGY PLUS	33	2008570	K-FLOAT	13
2001890	SPECTRUM SYNERGY PRIMO	34	2008590	ATTACK ONE 2.0	7, 23
2001891	GECKO	35	2008620	ATTACK ONE 2.0 WOMEN	7
2001892	LEO	35	2008630	ATTACK TWO 2.0	8
2001893	TIRO	36	2008640	ATTACK THREE 2.0	8, 25
2001894	SOFT	36	2008650	ATTACK 2.0 WOMEN	9, 24
2001896	SOFT KIDS	37	2008660	ATTACK 2.0 JUNIOR	14, 31
2008499	ATTACK MIDCUT	9	2008670	ATTACK MID	26
			2008671	ATTACK PRO 2.0 WOMEN	23

Imprint

uhlsport GmbH
Klingenbachstraße 3
72336 Balingen
Germany

Tel: +49 (0) 7433 268-0
Fax: +49 (0) 7433 268-194
E-Mail: info@uhlsport.com

Visit us on



kempa-sports.de

Photography: Marc Schäfer Photography

The artwork in this catalogue was obtained from the following sources:

Sascha Klahn Deuring Photography atelier schiffleitner Daniel Vantor www.fasching.photo Rémy Grattessol Mats Engfors Ulrich Heinsen	Fastmedia.ro Loridomedia info@mmcontent.be www.tobias-ebert.com Flemming Scully Alain Decamps Karl Gustavsson Boudewijn Benting	Wolfgang Pichler ANGELA BUSER Gert Laursen ALM Kuba Hajduk Andreas Fischer Wuppertal Erik Grönberg
--	--	--

Subject to technical modifications, misprints, errors and price revisions.
Colours may appear different in print from the original colours. All prices
quoted are manufacturer's recommended prices. Any copying or reproduction
of any part of this catalogue is only allowed with the expressed permission of
Kempa®. January 2021.

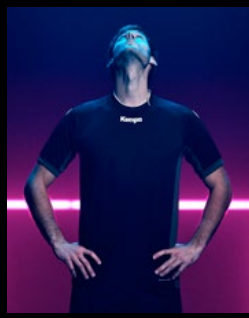
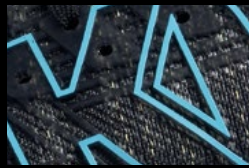
**Supplies are limited.



2021



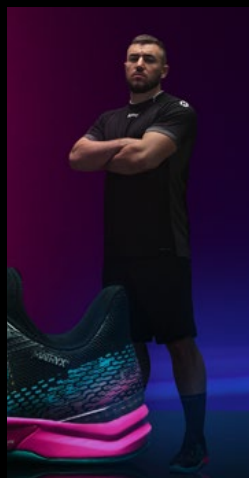
Kempa



W I N G



ATTACK



SHOES & HANDBALLS

